



KXZ2 Cooling only series Hi-COP combination

20 ~ 40HP (56.0kW~113.5kW)



Model No.	Nominal Cooling Capacity
FDC560CKXZA2 (FDC280+FDC280)	56.0kW
FDC850CKXZA2 (FDC280+FDC280+FDC280)	84.0kW
FDC900CKXZA2 (FDC280+FDC280+FDC335)	89.5kW
FDC950CKXZA2 (FDC280+FDC335+FDC335)	95.0kW
FDC1000CKXZA2 (FDC335+FDC335+FDC335)	100.5kW
FDC1060CKXZA2 (FDC280+FDC335+FDC400)	107.0kW
FDC1120CKXZA2 (FDC335+FDC400+FDC400)	113.5kW



FDC1060

(combination example)



Specifications

Item		Model	FDC560CKXZA2	FDC850CKXZA2	FDC900CKXZA2
Combination (FDC)			280CKXZA2	280CKXZA2	280CKXZA2
			280CKXZA2	280CKXZA2	280CKXZA2
			-	280CKXZA2	335CKXZA2
Nominal horse power			20HP	30HP	32HP
Power source			3 Phase 380-415V, 50Hz		
Starting current		A	10	15	
Max current		A	40.2	60.3	
Nominal capacity	Cooling	kW	56.0	84.0	89.5
Electrical characteristics	Power consumption	Cooling kW	14.51	21.76	23.49
Exterior dimensions	HxWxD	mm	1697x2700x720	1697x4050x720	
Net weight		kg	567	850	
Refrigerant charge	R410A	kg	11.0x2	11.0x3	
Refrigerant piping size	Liquid line	mm(in)	ø12.7(1/2")		ø15.88(5/8")
	Gas line		ø28.58(1 1/8")		ø31.75(1 1/4") [ø34.92(1 3/8")]
Capacity connection		%	80~130		
Number of connectable indoor units			48	73	78

Item		Model	FDC950CKXZA2	FDC1000CKXZA2	FDC1060CKXZA2	FDC1120CKXZA2
Combination (FDC)			280CKXZA2	335CKXZA2	335CKXZA2	335CKXZA2
			335CKXZA2	335CKXZA2	335CKXZA2	400CKXZA2
			335CKXZA2	335CKXZA2	400CKXZA2	400CKXZA2
Nominal horse power			34HP	36HP	38HP	40HP
Power source			3 Phase 380-415V, 50Hz			
Starting current		A	15			
Max current		A	60.3		72.2	84.1
Nominal capacity	Cooling	kW	95.0	100.5	107.0	113.5
Electrical characteristics	Power consumption	Cooling kW	25.22	26.94	28.94	30.94
Exterior dimensions	HxWxD	mm	1697x4050x720		2052x4050x720	
Net weight		kg	850	894	938	
Refrigerant charge	R410A	kg	11.0x3		11.0x2+11.5	11.0+11.5x2
Refrigerant piping size	Liquid line	mm(in)	ø15.88(5/8")		ø19.05(3/4")	
	Gas line		ø31.75(1 1/4") [ø34.92(1 3/8")]		ø38.1(1 1/2") [ø34.92(1 3/8")]	
Capacity connection		%	80~130			
Number of connectable indoor units			80			

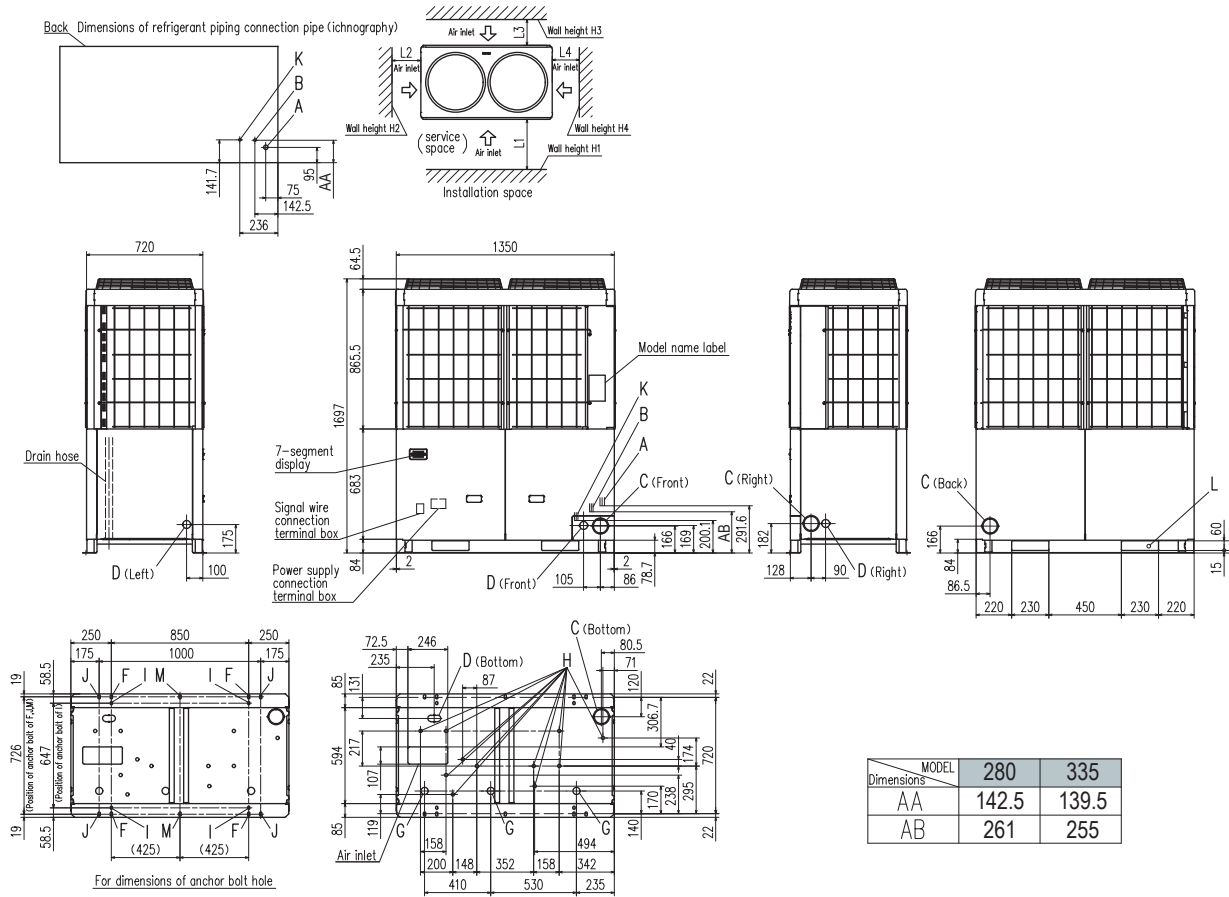
1. The data are measured under the following conditions(ISO-T1,H1). Cooling: Indoor temp. of 27°CDB, 19°CWB, and outdoor temp. of 35°CDB. Heating: Indoor temp. of 20°CDB, and outdoor temp. of 7°CDB, 6°CWB.
 2. Sound pressure level indicates the value in an anechoic chamber. During operation these values are somewhat higher due to ambient conditions.
 3. [] : Pipe sizes applicable to European installations are shown in parentheses.

Dimensions

Please refer to page 45, 47.

Dimensions

All measurements in mm.



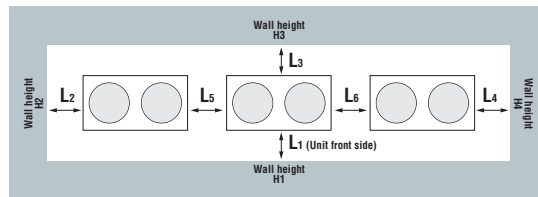
Dimensions	MODEL 280	335
AA	142.5	139.5
AB	261	255

Mark	Content	280	335
A	Refrigerant gas piping connection pipe	ø22.22(Brazing)	ø25.4(Brazing)
B	Refrigerant liquid piping connection pipe	ø9.52(Flare)	ø12.7(Flare)
C	Refrigerant piping exit hole	ø88(or ø100)	
D	Power supply entry hole	ø50 (right · left · front), long hole 40 x 80 (bottom)	
F	Anchor bolt hole	M10 x 4 places	
G	Drain waste water hose hole	ø45 x 3 places	
H	Drain hole	ø20 x 11 places	
K	Refrigerant oil equalization piping connection pipe	ø9.52(Flare)	
L	Carrying in or hole for hanging	230 x 60	

Installation example		
Dimensions	1	2
L ₁	500	Open
L ₂	10(30)	10(30)
L ₃	100	100
L ₄	10(30)	Open
H ₁	1500	Open
H ₂	No limit	No limit
H ₃	1000	No limit
H ₄	No limit	Open

() :In case it is the promised installation location that the outdoor unit is used on conditions with the ambient temperature of 43°C or more.

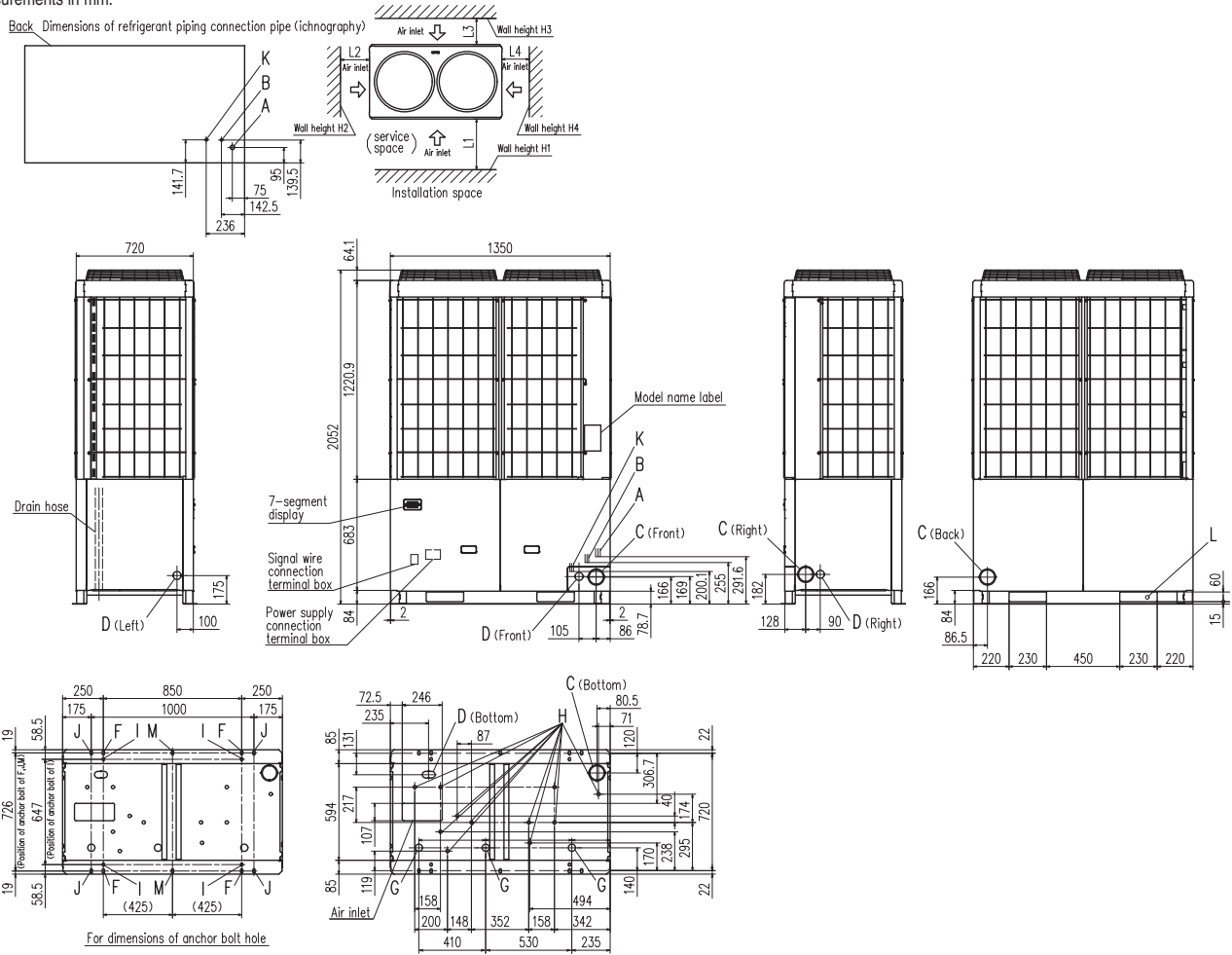
When more than one unit is installed



Installation example		
Dimensions	1	2
L ₁	500	Open
L ₂	10(30)	200
L ₃	100	300
L ₄	10(30)	Open
L ₅	10(30)	400
L ₆	10(30)	400
H ₁	1500	Open
H ₂	No limit	No limit
H ₃	1000	No limit
H ₄	No limit	Open

Dimensions

All measurements in mm.

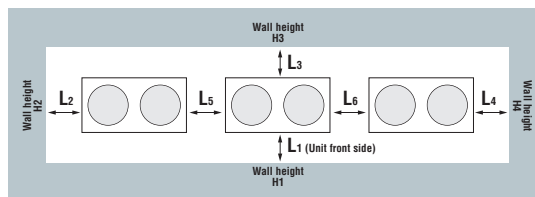


Mark	Content	400	450, 475, 500, 560
A	Refrigerant gas piping connection pipe	ø25.4(Brazing)	ø28.58(Brazing)
B	Refrigerant liquid piping connection pipe		ø12.7(Flare)
C	Refrigerant piping exit hole		ø88(or ø100)
D	Power supply entry hole	ø50 (right · left · front), long hole 40 x 80 (bottom)	
F	Anchor bolt hole	M10 x 4 places	
G	Drain waste water hose hole	ø45 x 3 places	
H	Drain hole	ø20 x 11 places	
K	Refrigerant oil equalization piping connection pipe	ø9.52(Flare)	
L	Carrying in or hole for hanging	230 x 60	

Installation example		
Dimensions	1	2
L ₁	500	Open
L ₂	10(30)	10(30)
L ₃	100	100
L ₄	10(30)	Open
H ₁	1500	Open
H ₂	No limit	No limit
H ₃	1000	No limit
H ₄	No limit	Open

() : In case it is the promised installation location that the outdoor unit is used on conditions with the ambient temperature of 43°C or more.

When more than one unit is installed



Installation example		
Dimensions	1	2
L ₁	500	Open
L ₂	10(30)	200
L ₃	100	300
L ₄	10(30)	Open
L ₅	10(30)	400
L ₆	10(30)	400
H ₁	1500	Open
H ₂	No limit	No limit
H ₃	1000	No limit
H ₄	No limit	Open